

SITE PLANS FOR: DAWSONVILLE MAIN STREET PARK FENCING

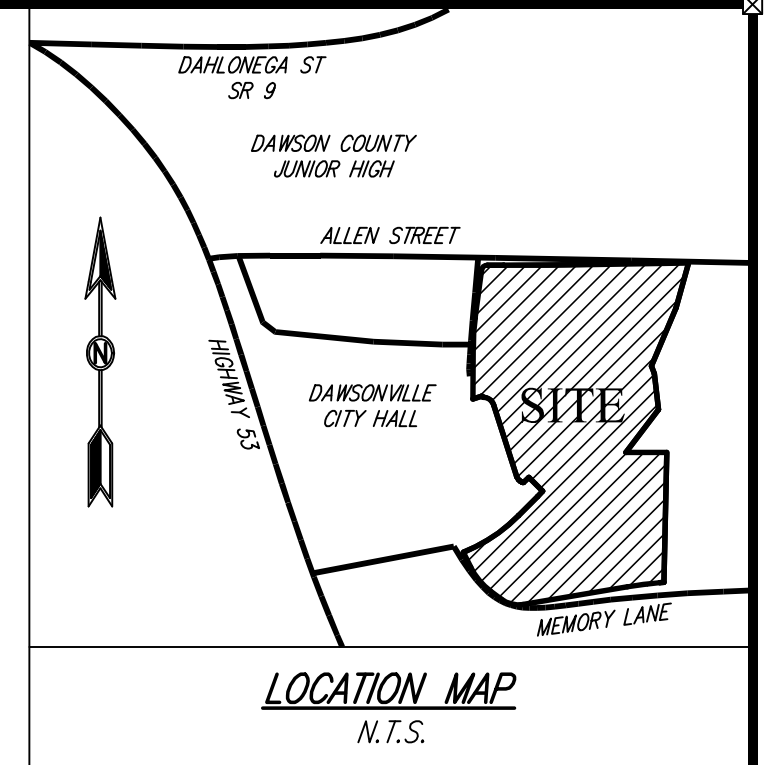
ZONED: INST (INSTITUTIONAL DISTRICT)

PARCEL: D04-020

LAND LOTS 443 & 444, 11TH DISTRICT, 1ST SECTION
CITY OF DAWSONVILLE, GA

TOTAL AREA: ~14.14 ACRES

DES PROJECT NO. 2018-146.1



NOTIFY CITY OF DAWSONVILLE 24-HOURS BEFORE COMMENCEMENT OF CONSTRUCTION

OWNER/DEVELOPER
CITY OF DAWSONVILLE
415 HIGHWAY 53 EAST
SUITE 100
DAWSONVILLE, GA 30534
PHONE: 706-265-3256
www.dawsonville-ga.gov

CONTACT
MR. BOB BÖLZ
PHONE: 706-265-3256
bob.bolz@dawsonville-ga.gov

PROJECT DESCRIPTION:

CURRENTLY, THIS PROPERTY IS BEING DEVELOPED FOR A PARK FOR THE CITY OF DAWSONVILLE. THE PHASE OF THE DEVELOPMENT CONSISTS OF THE INSTALLATION OF FENCING AND GATES.

TOTAL AREA: ~14.14 ACRES

SITE ADDRESS: 135 MAIN STREET, DAWSONVILLE, GA 30534

BOUNDARY, TOPOGRAPHIC, AND UTILITIES INFORMATION FROM SURVEY FILES PROVIDED BY CITY OF DAWSONVILLE, PREPARED BY TRAIL AND SONS, INC. DATED 3/22/17. DAVIS ENGINEERING AND SURVEYING, LLC IS NOT RESPONSIBLE FOR THE LOCATION OF UNDERGROUND UTILITIES.

CONTOUR INTERVAL = 2'

NO PORTION OF THIS SITE IS LOCATED WITHIN THE 100-YEAR FLOOD PRONE AREA AS PER FLOOD INSURANCE RATE MAP NO. 13085C011C, DATED 04/04/2018.

WATER SOURCE: CITY OF DAWSONVILLE
SEWER SOURCE: CITY OF DAWSONVILLE

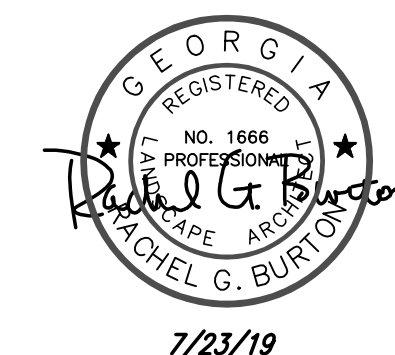
SHEET INDEX	
1	COVER SHEET
2	OVERALL FENCE PLAN
3	NORTH FENCE PLAN
4	SOUTH FENCE PLAN

PREPARED BY:

DES
DAVIS
ENGINEERING & SURVEYING
113 PROMINENCE COURT
SUITE 210
DAWSONVILLE, GA 30534
PHONE: (706) 265-1234
DAVISENGINEERS.COM



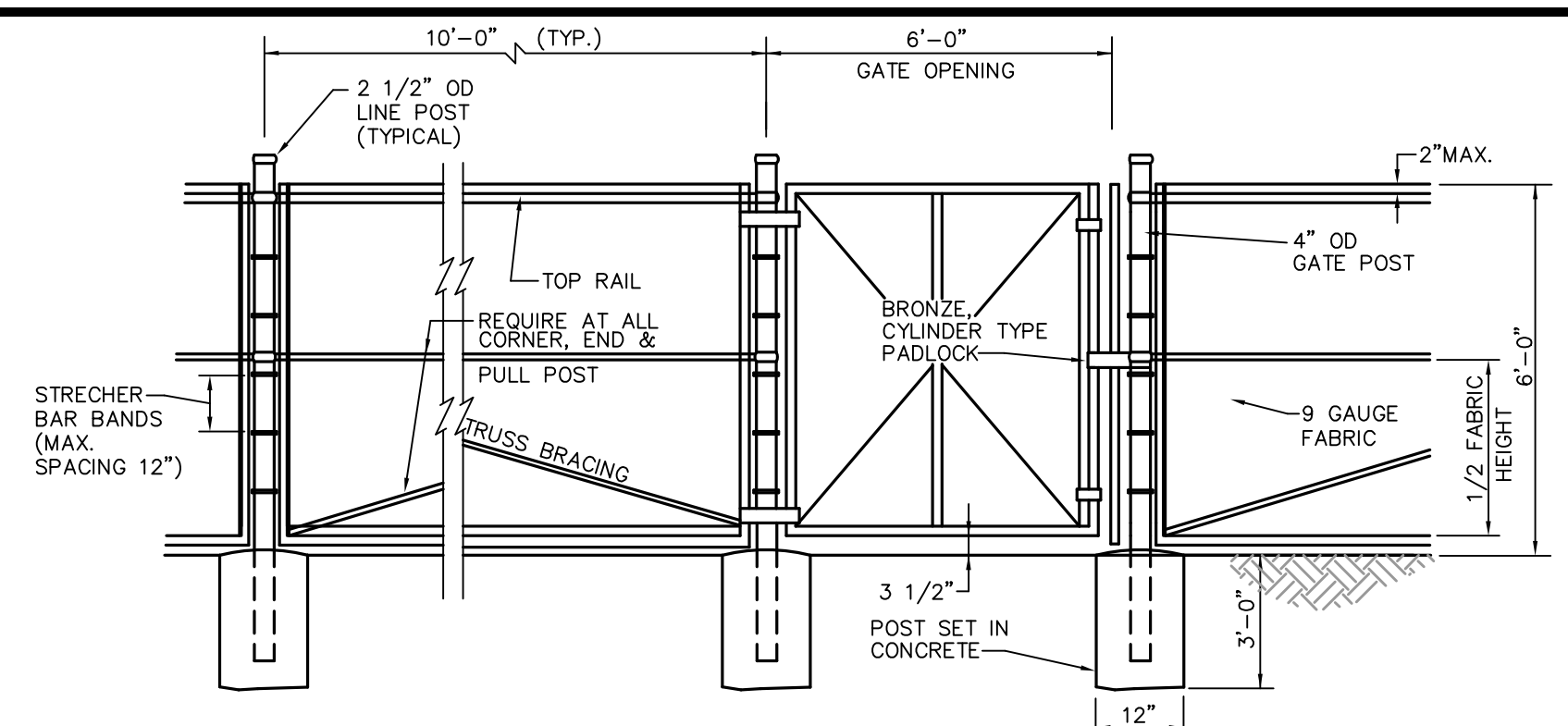
IF ANY CONFLICTS, DISCREPANCIES, OR ANY OTHER UNSATISFACTORY CONDITIONS ARE DISCOVERED, EITHER ON THE CONSTRUCTION DOCUMENTS OR FIELD CONDITIONS, THE CONTRACTOR MUST NOTIFY THE ENGINEER IMMEDIATELY AND SHALL NOT COMMENCE FURTHER OPERATION UNTIL THE CONFLICTS, DISCREPANCIES, OR OTHER UNSATISFACTORY CONDITIONS ARE RESOLVED.



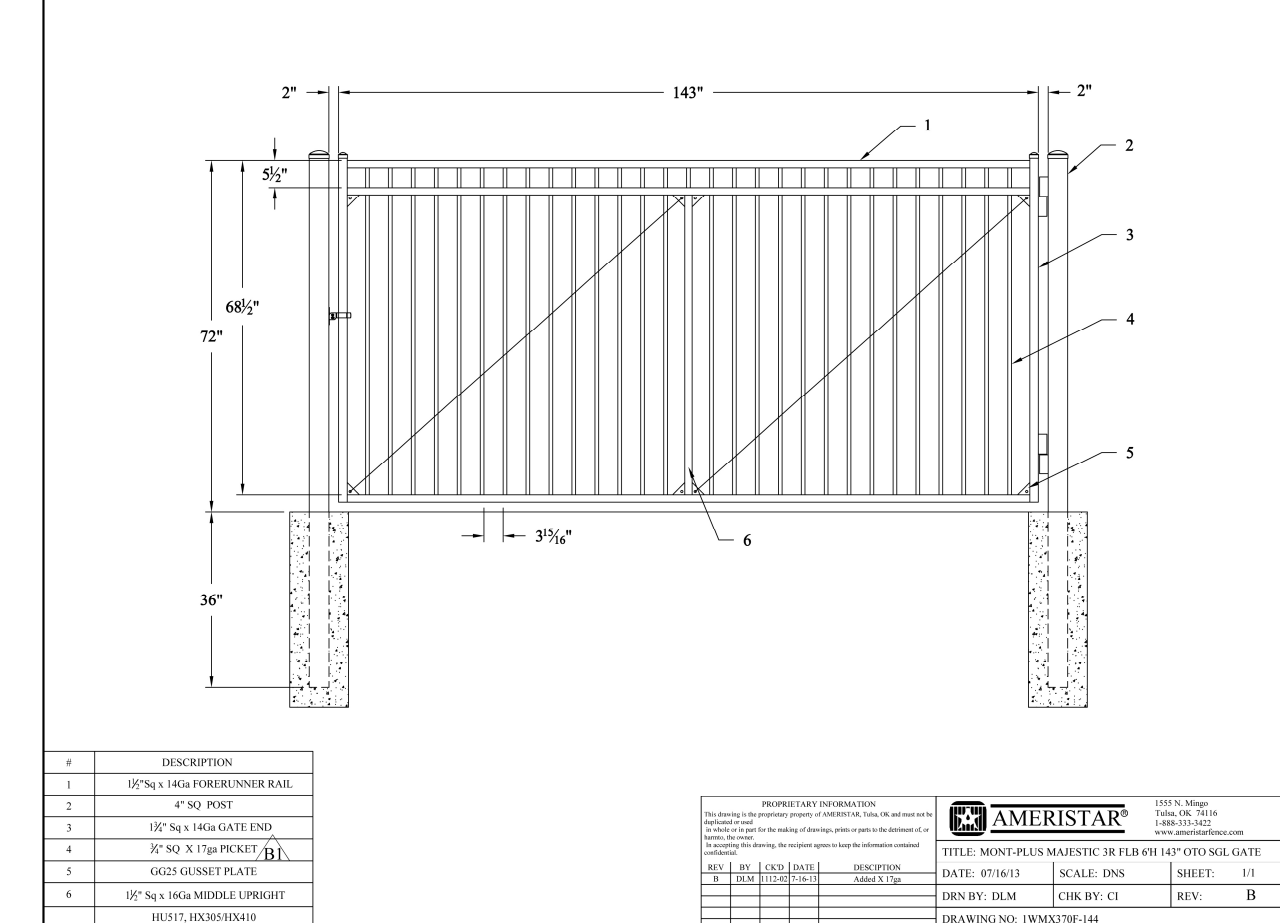
REVISION	DATE	DESCRIPTION
-	7-23-19	INITIAL SUBMITAL TO CITY

THE INSTALLATION OF EROSION CONTROL MEASURES AND PRACTICES SHALL OCCUR PRIOR TO OR CONCURRENT WITH LAND DISTURBING ACTIVITIES.
THE LOCATION OF ALL UTILITIES SHOWN ON THESE DRAWINGS ARE APPROXIMATE AND WERE OBTAINED FROM OBSERVATIONS AT THE SITE AND/OR FROM INFORMATION PROVIDED BY THE PROPERTY OR UTILITY OWNERS.
DAVIS ENGINEERING & SURVEYING, LLC DOES NOT GUARANTEE THAT THE LOCATIONS SHOWN ARE EXACT AND IT SHALL BE THE RESPONSIBILITY OF THE CONTRACTOR TO DETERMINE THE EXACT LOCATIONS OF ALL EXISTING UTILITIES, TO NOTIFY UTILITY OWNERS PRIOR TO CONSTRUCTION, AND TO COORDINATE THE RELOCATION OF ALL THE UTILITIES WHICH CONFLICT WITH THE PROPOSED IMPROVEMENTS SHOWN ON THESE DRAWINGS.

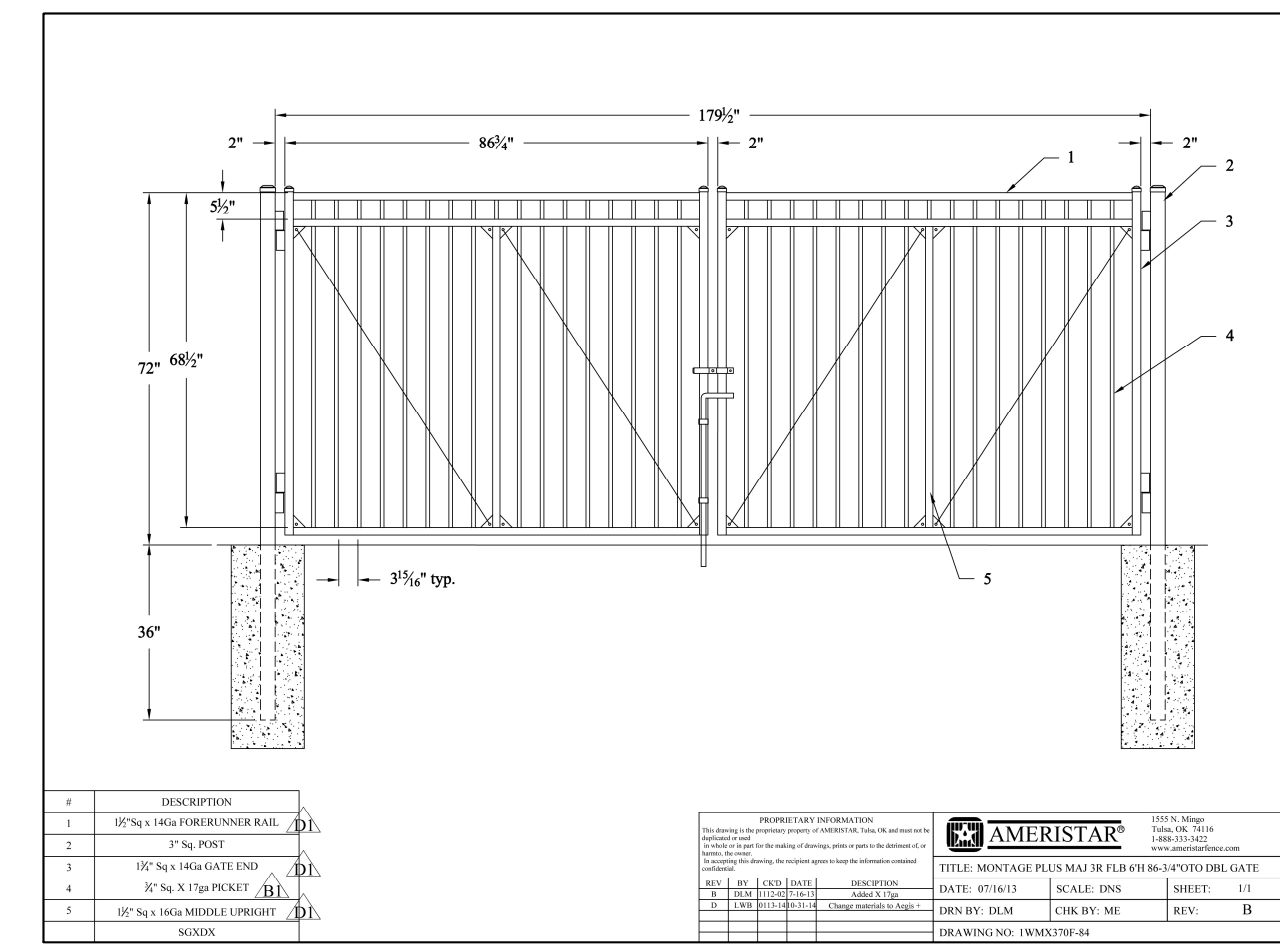
COPYRIGHT © 2018 THESE DRAWINGS ARE PROTECTED BY FEDERAL COPYRIGHT PROTECTION. UNAUTHORIZED USE OF THESE DRAWINGS, INCLUDING ANY REPRODUCTION OR COPY OF IT, WHETHER IN WHOLE OR IN PART, MAY RESULT IN AN INFRINGEMENT ACTION.



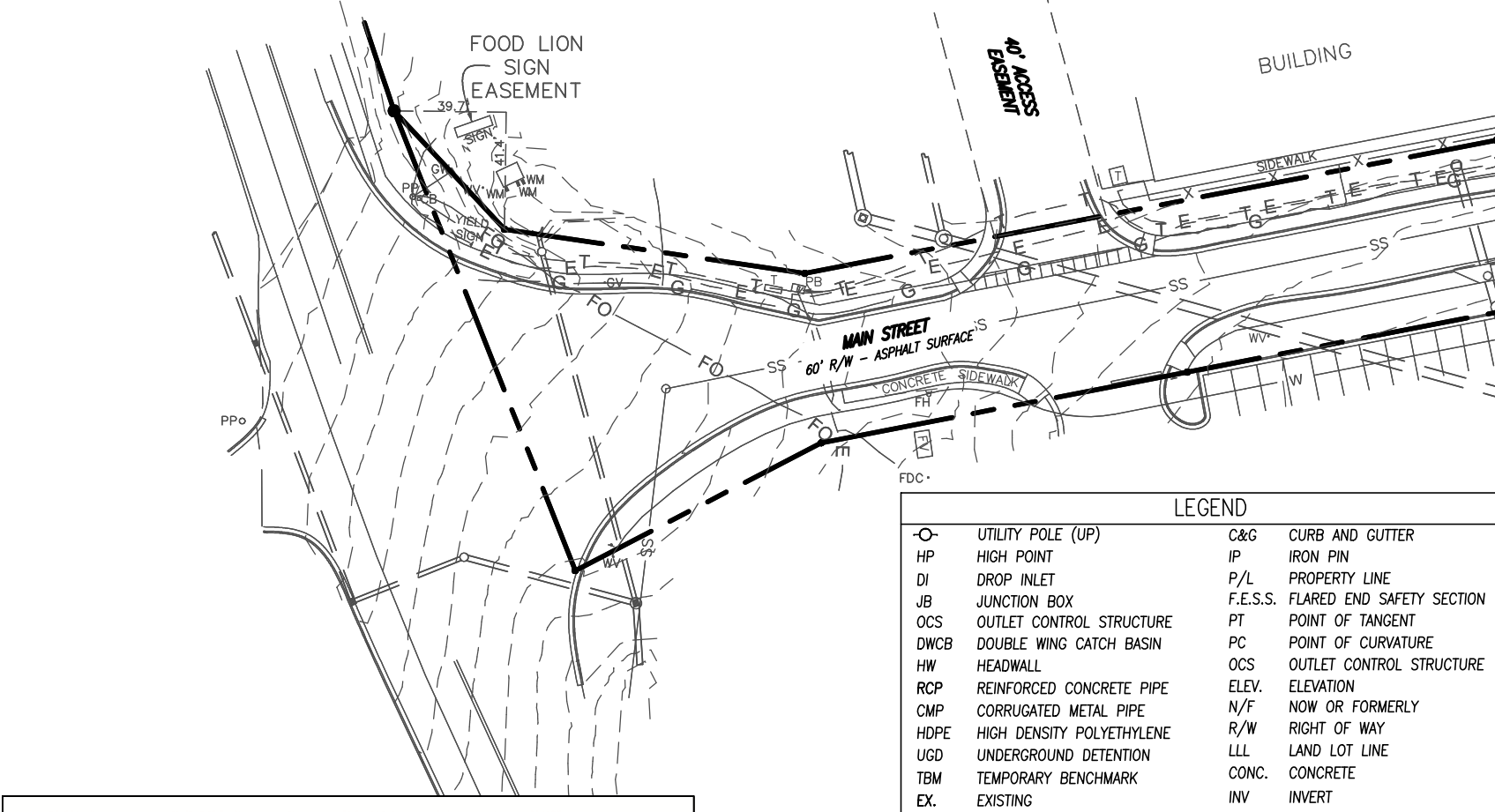
CHAIN LINK FENCE & GATE
N.T.S.



12' MONTAGE PLUS MB SINGLE GATE
OR APPROVED EQUAL
N.T.S.

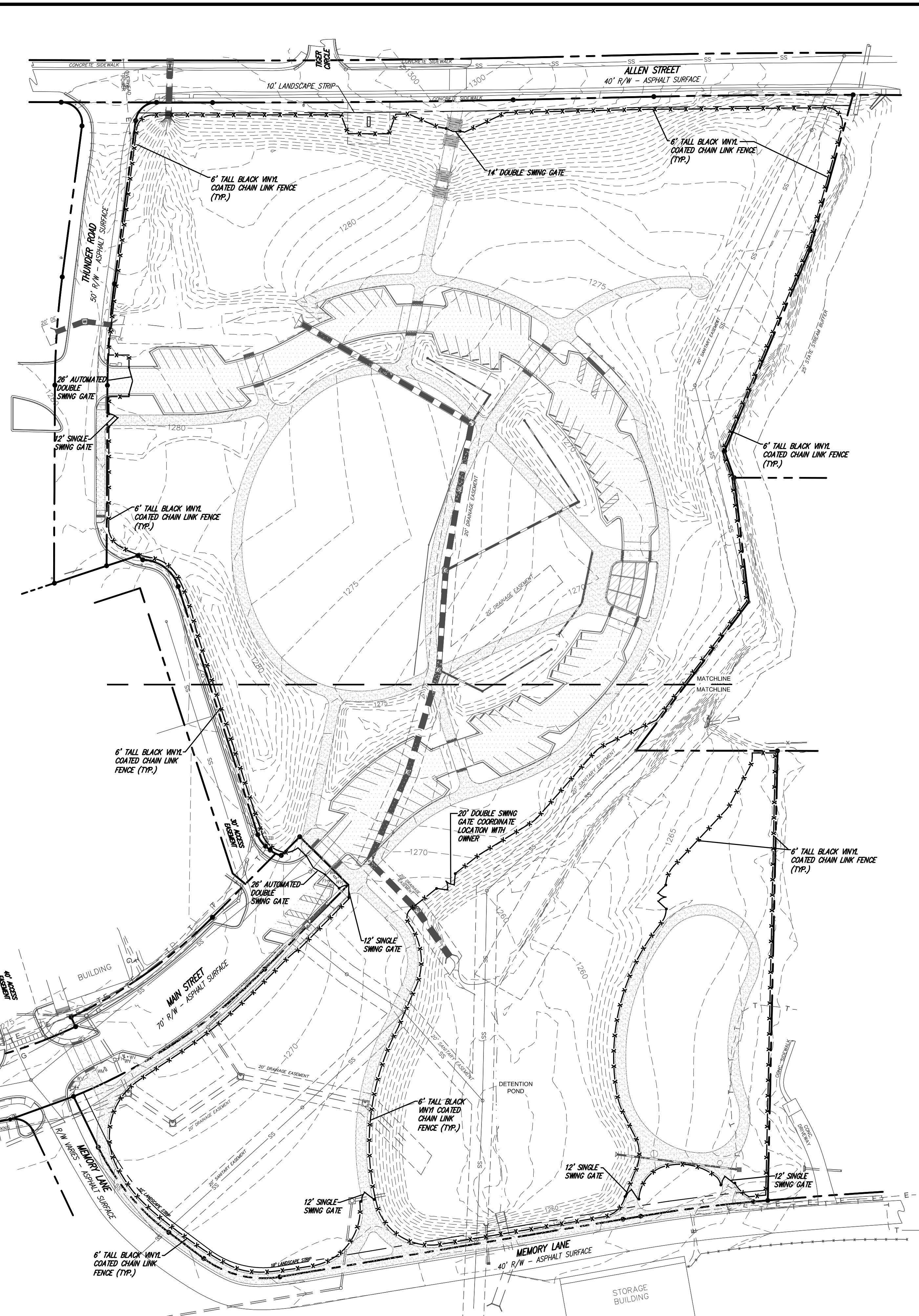


14' MONTAGE PLUS MB DOUBLE GATE
OR APPROVED EQUAL
N.T.S.



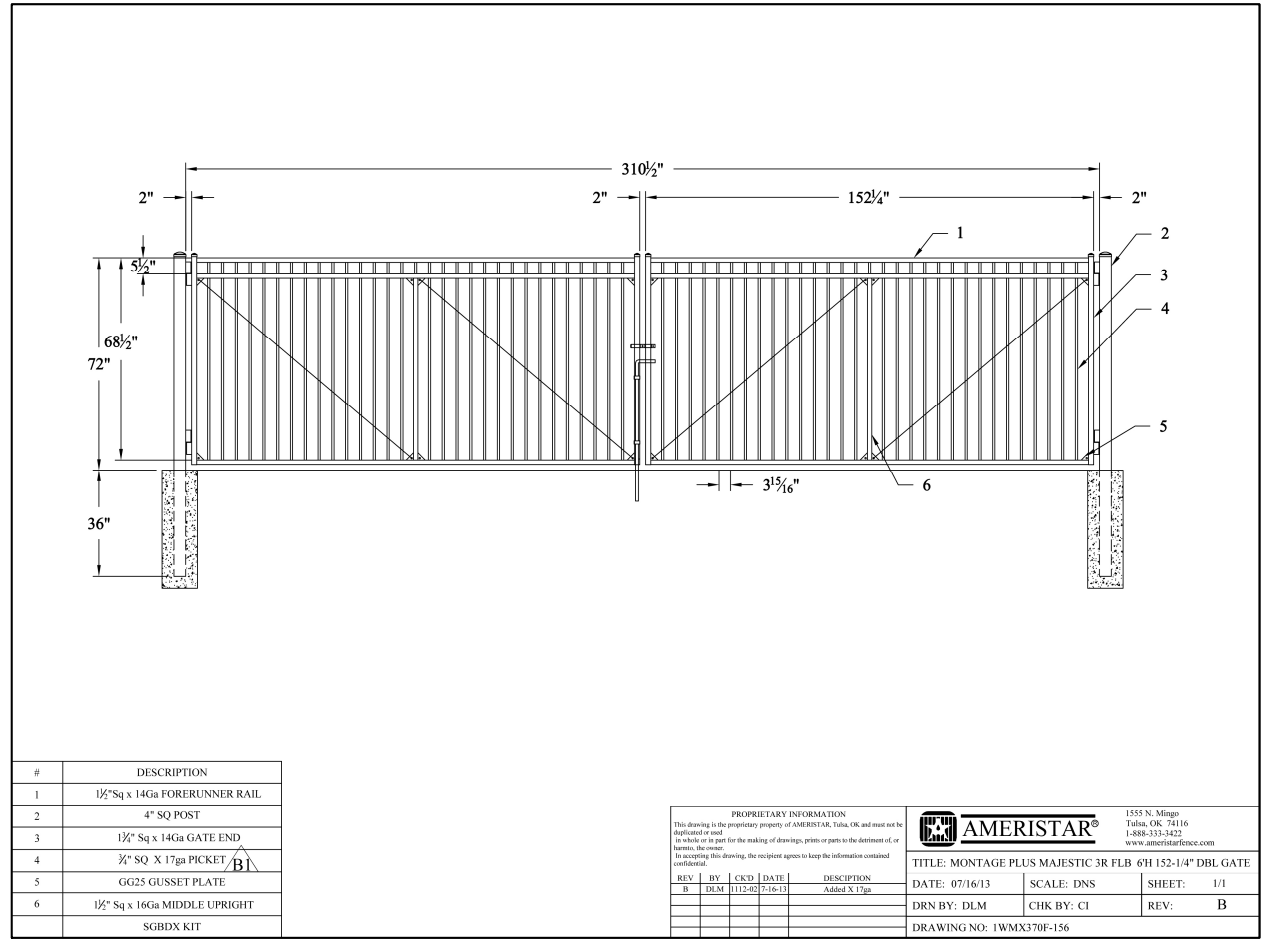
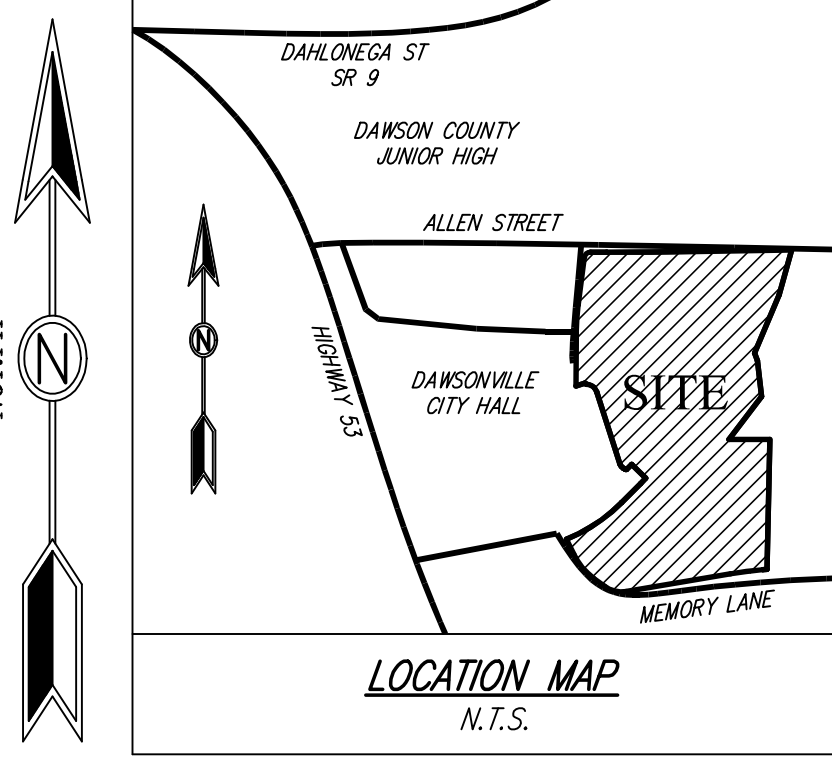
LEGEND

○ UTILITY POLE (UP)	○ CURB AND GUTTER
HP HIGH POINT	IP IRON PIN
DI DROP INLET	P/L PROPERTY LINE
JB JUNCTION BOX	P.E.S.S. FLARED END SAFETY SECTION
OCS OUTLET CONTROL STRUCTURE	PT POINT OF TANGENT
DWCB DOUBLE WING CATCH BASIN	PC POINT OF CURVATURE
HW HEADWALL	OCS OUTLET CONTROL STRUCTURE
RCP REINFORCED CONCRETE PIPE	ELEVATION
CMP CORRUGATED METAL PIPE	N/O NOW OR FORMERLY
HDPE HIGH DENSITY POLYETHYLENE	R/W RIGHT OF WAY
UDG UNDERGROUND DETENTION	L/L LAND LOT LINE
TM TEMPORARY BENCHMARK	CONC. CONCRETE
EX EXISTING	IN INVERT
PROP. PROPOSED	EDP EDGE OF PAVEMENT
PH FIRE HYDRANT	FW FENCE
WM WATER METER	SLT SLIT FENCE
LF LINEAR FEET	OE OVERHEAD ELECTRIC
DR DUCTILE IRON PIPE	SOLS SOILS
PVC POLYVINYL CHLORIDE	EXISTING TIE LINE
R RADIUS	BUILDING STRUCK LINE
SF SQUARE FEET	VEGETATIVE BUFFER
FFE FINISH FLOOR ELEVATION	

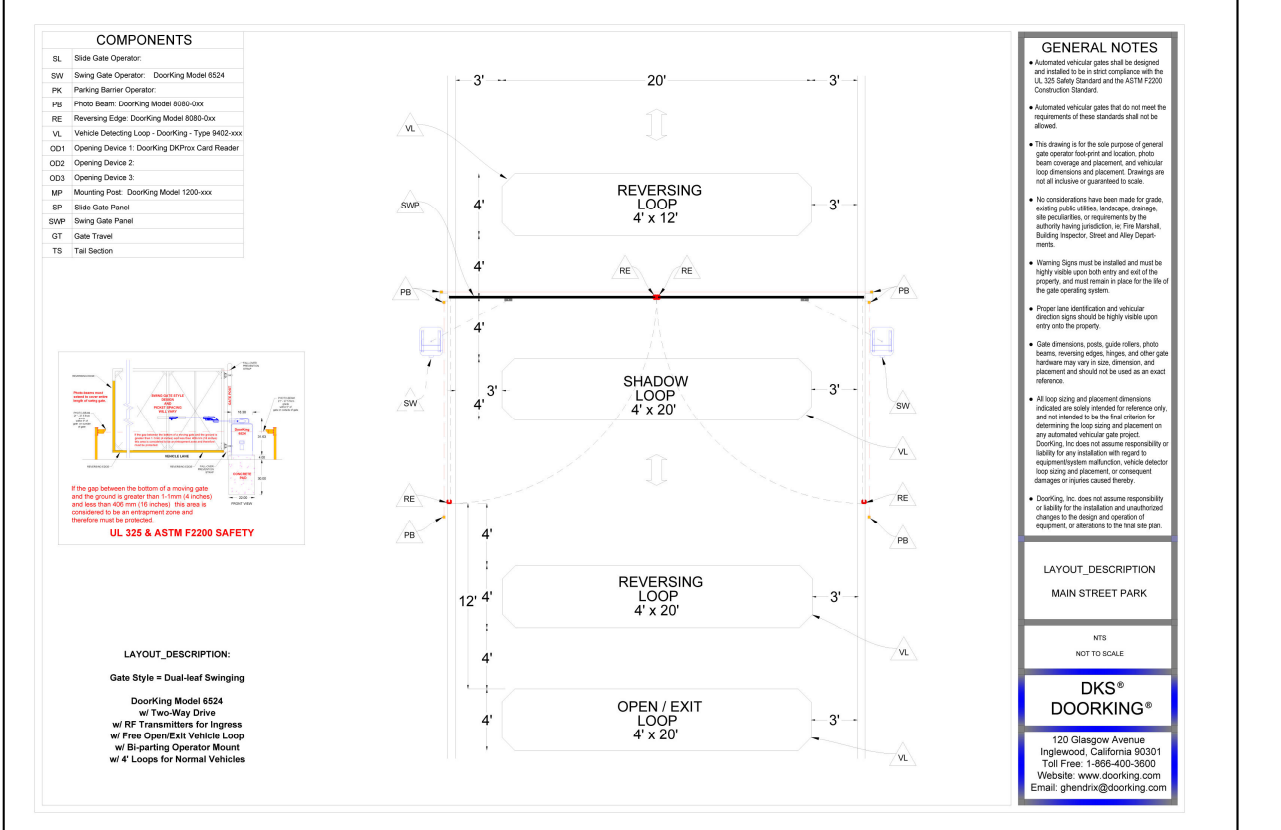


OWNER/DEVELOPER
CITY OF DAWSONVILLE
415 HIGHWAY 53 EAST
SUITE 100
DAWSONVILLE, GA 30534
PHONE: 706-265-3256
www.dawsonville-ga.gov

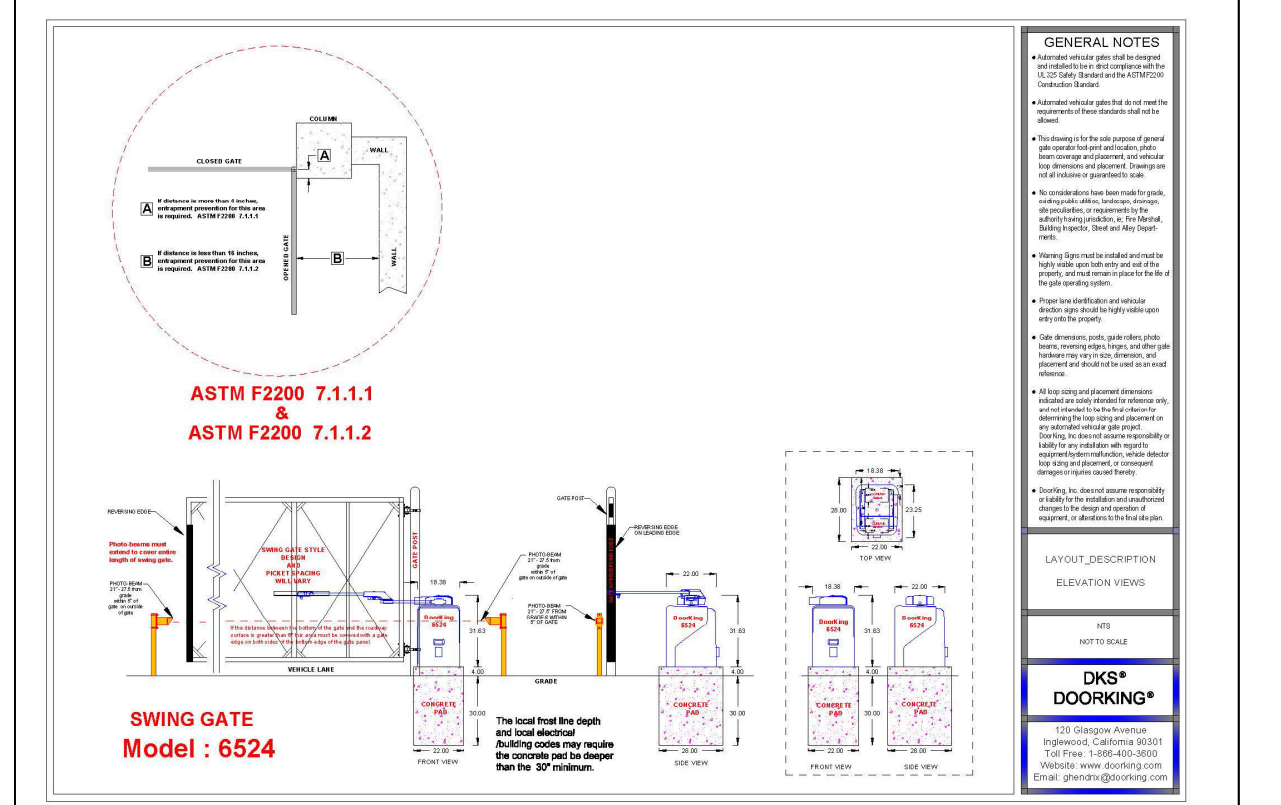
CONTACT
MR. BOB BOLZ
PHONE: 706-265-3256
bob.bolz@dawsonville-ga.gov



26' MONTAGE PLUS MB DOUBLE GATE
OR APPROVED EQUAL
N.T.S.

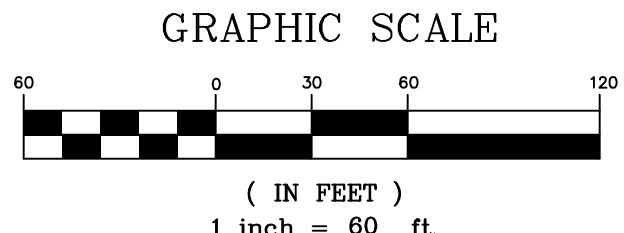


TYPICAL DETAIL - DOORKING MODEL 6524 FOR 26'
AUTOMATED DOUBLE SWING GATES OR
APPROVED EQUAL
N.T.S.



TYPICAL ELEVATION - DOORKING MODEL 6524 FOR
26' AUTOMATED DOUBLE SWING GATES OR
APPROVED EQUAL
N.T.S.

IF ANY CONFLICTS, DISCREPANCIES, OR ANY OTHER UNSATISFACTORY CONDITIONS ARE DISCOVERED, EITHER ON THE CONSTRUCTION DOCUMENTS OR FIELD CONDITIONS, THE CONTRACTOR MUST NOTIFY THE ENGINEER IMMEDIATELY AND SHALL NOT COMMENCE FURTHER OPERATION UNTIL THE CONFLICTS, DISCREPANCIES, OR OTHER UNSATISFACTORY CONDITIONS ARE RESOLVED.



DES DAVIS
ENGINEERING & SURVEYING
133 PROMINENCE COURT
SUITE 210
DAWSONVILLE, GA 30534
PHONE: (706) 265-1234
DAVISENGINEERS.COM

REGISTERED PROFESSIONAL ENGINEER
NO. 1666
STATE OF GEORGIA
MICHEL G. BURTON
7/23/19

REVISION	DATE	DESCRIPTION
1	7-23-19	INITIAL SUBMITTAL TO CITY

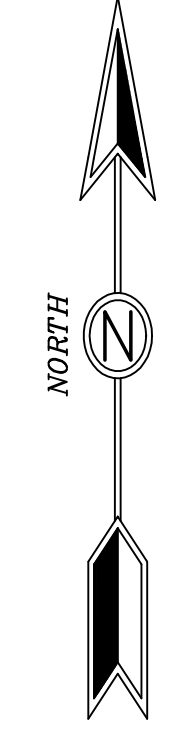
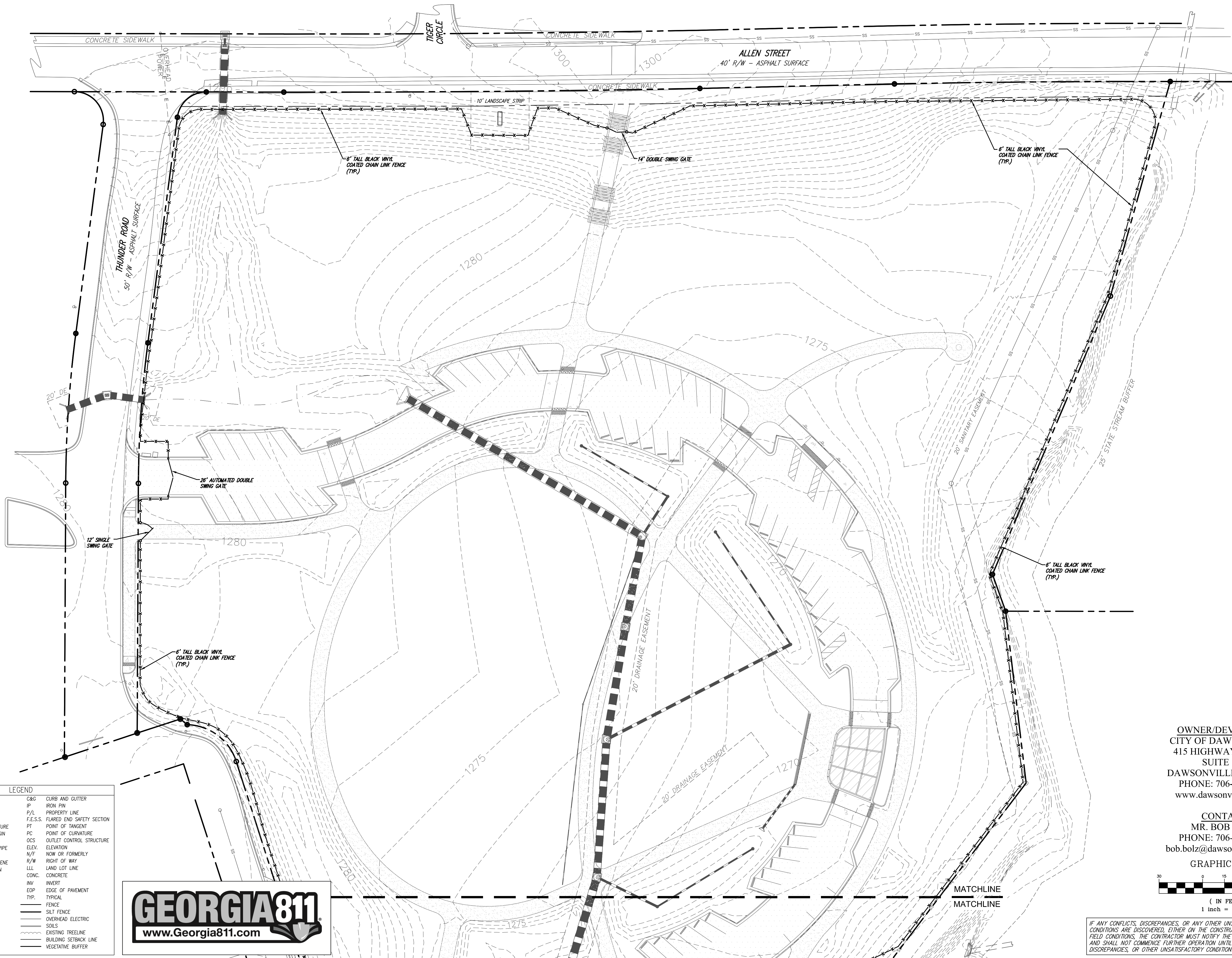
OVERALL FENCE PLAN
DAWSONVILLE MAIN STREET PARK PHASE I
135 MAIN STREET
DAWSONVILLE, GA 30534
LAND LOTS 443 & 444, 11TH DISTRICT, 1ST SECTION

DRAWN BY: RGB
CHECKED BY: JKD
LAND LOT: 443, 444
DISTRICT: 13TH
SECTION: N
CITY: DAWSONVILLE, GA
COUNTY: DAWSON
DATE: 10/22/18

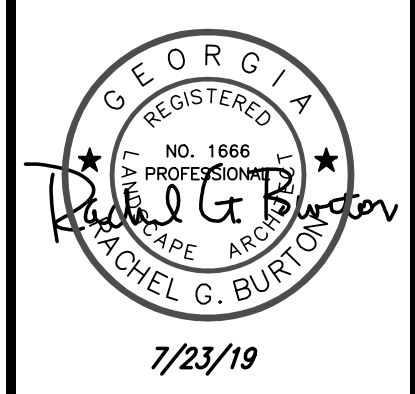
SHEET NO.
2 OF 4
PROJECT NO.
2018-146.1

GEORGIA811
www.Georgia811.com

COPYRIGHT © 2018 THESE DRAWINGS ARE PROTECTED BY FEDERAL COPYRIGHT PROTECTION. UNAUTHORIZED USE OF THESE DRAWINGS, INCLUDING ANY REPRODUCTION OR COPY OF IT, WHETHER IN WHOLE OR IN PART, MAY RESULT IN AN INFRINGEMENT ACTION.



DES DAVIS
ENGINEERING & SURVEYING
133 PROMINENCE COURT
SUITE 210
DAWSONVILLE, GA 30534
PHONE: (706) 265-1234
DAVISENGINEERS.COM

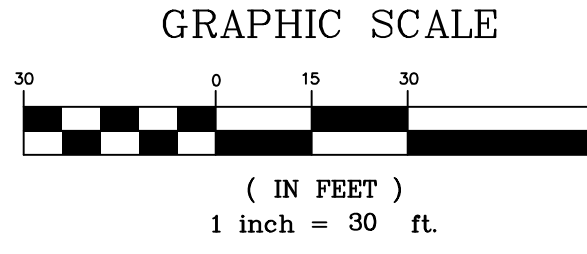


REVISION	DATE	DESCRIPTION
-	7-23-19	INITIAL SUBMITTAL TO CITY

NORTH FENCE PLAN
DAWSONVILLE MAIN STREET PARK PHASE I
135 MAIN STREET
DAWSONVILLE, GA 30534
LAND LOTS 443 & 444, 11TH DISTRICT, 1ST SECTION

OWNER/DEVELOPER
CITY OF DAWSONVILLE
415 HIGHWAY 53 EAST
SUITE 100
DAWSONVILLE, GA 30534
PHONE: 706-265-3256
www.dawsonville-ga.gov

CONTACT
MR. BOB BOLZ
PHONE: 706-265-3256
bob.bolz@dawsonville-ga.gov



DRAWN BY:	RGB
CHECKED BY:	JKD
LAND LOT:	443, 444
DISTRICT:	13TH
SECTION:	N
CITY:	DAWSONVILLE, GA
COUNTY:	DAWSON
DATE:	10/22/18

SHEET NO.
3 OF 4

PROJECT NO.
2018-146.1

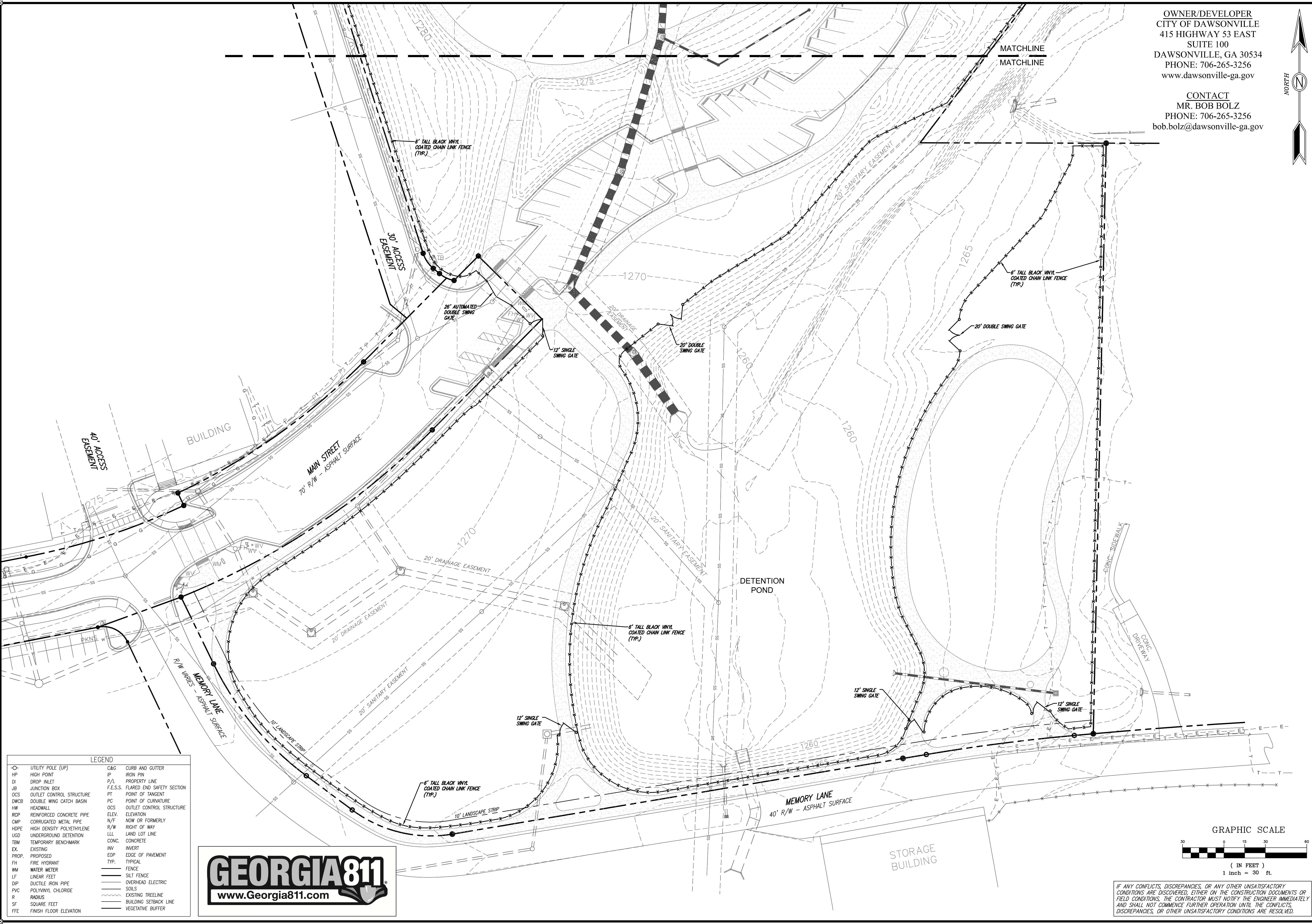
IF ANY CONFLICTS, DISCREPANCIES, OR ANY OTHER UNSATISFACTORY CONDITIONS ARE DISCOVERED, EITHER ON THE CONSTRUCTION DOCUMENTS OR FIELD CONDITIONS, THE CONTRACTOR MUST NOTIFY THE ENGINEER IMMEDIATELY AND SHALL NOT COMMENCE FURTHER OPERATION UNTIL THE CONFLICTS, DISCREPANCIES, OR OTHER UNSATISFACTORY CONDITIONS ARE RESOLVED.

LEGEND

○ UTILITY POLE (UP)	— CURB AND GUTTER
HP HIGH POINT	IP IRON PIN
DI DROP INLET	P/L PROPERTY LINE
JB JUNCTION BOX	F.E.S.S. FLARED END SAFETY SECTION
OCS OUTLET CONTROL STRUCTURE	PT POINT OF TANGENT
DWCB DOUBLE WING CATCH BASIN	PC POINT OF CURVATURE
HW HEADWALL	OCS OUTLET CONTROL STRUCTURE
RCP REINFORCED CONCRETE PIPE	ELEV. ELEVATION
CMP CORRUGATED METAL PIPE	N/F NOW OR FORMERLY
HDP HIGH DENSITY POLYETHYLENE	R/W RIGHT OF WAY
UGD UNDERGROUND DETENTION	LLL LAND LOT LINE
TBM TEMPORARY BENCHMARK	CONC. CONCRETE
EX EXISTING	INV INVERT
PROP. PROPOSED	EOP EDGE OF PAVEMENT
FH FIRE HYDRANT	TYP. TYPICAL
WM WATER METER	— FENCE
LF LINEAR FEET	— SILT FENCE
DIP DUCTILE IRON PIPE	— OVERHEAD ELECTRIC
PVC POLYVINYL CHLORIDE	— SOILS
R RADIUS	— EXISTING TREELINE
SF SQUARE FEET	— BUILDING SETBACK LINE
FFE FINISH FLOOR ELEVATION	— VEGETATIVE BUFFER

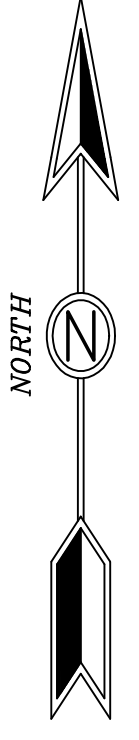


2018 THESE DRAWINGS ARE PROTECTED BY FEDERAL COPYRIGHT PROTECTION. UNAUTHORIZED USE OF THESE DRAWINGS, INCLUDING ANY REPRODUCTION OR COPY OF IT, WHETHER IN WHOLE OR IN PART, MAY RESULT IN AN INFRINGEMENT ACTION.

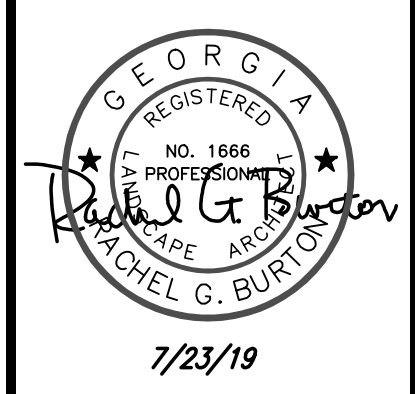


OWNER/DEVELOPER
CITY OF DAWSONVILLE
415 HIGHWAY 53 EAST
SUITE 100
DAWSONVILLE, GA 30534
PHONE: 706-265-3256
www.dawsonville-ga.gov

CONTACT
MR. BOB BOLZ
PHONE: 706-265-3256
bob.bolz@dawsonville-ga.gov



DES DAVIS
ENGINEERING & SURVEYING
133 PROMINENCE COURT
SUITE 210
DAWSONVILLE, GA 30534
PHONE: (706) 265-1234
DAVISENGINEERS.COM



REVISION	DATE	DESCRIPTION
-	7-23-19	INITIAL SUBMITTAL TO CITY

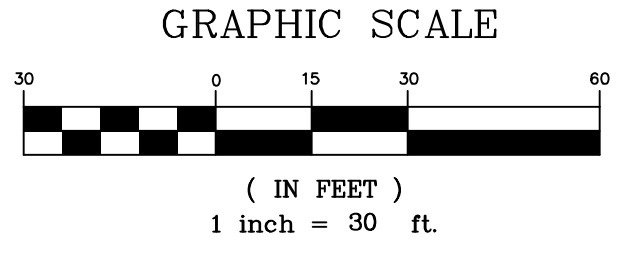
SOUTH FENCE PLAN
DAWSONVILLE MAIN STREET PARK PHASE I
135 MAIN STREET
DAWSONVILLE, GA 30534
LAND LOTS 443 & 444, 11TH DISTRICT, 1ST SECTION

DRAWN BY: RGB
CHECKED BY: JKD
LAND LOT: 443, 444
DISTRICT: 13TH
SECTION: N
CITY: DAWSONVILLE, GA
COUNTY: DAWSON
DATE: 10/22/18

SHEET NO.
4 OF 4
PROJECT NO.
2018-146.1

LEGEND

○ UTILITY POLE (UP)	C&G CURB AND GUTTER
HP HIGH POINT	IP IRON PIN
DI DROP INLET	P/L PROPERTY LINE
JB JUNCTION BOX	F.E.S.S. FLARED END SAFETY SECTION
OCB OUTLET CONTROL STRUCTURE	PT POINT OF TANGENT
DWCB DOUBLE WING CATCH BASIN	PC POINT OF CURVATURE
HW HEADWALL	OCB OUTLET CONTROL STRUCTURE
RCP REINFORCED CONCRETE PIPE	ELEV. ELEVATION
CMP CORRUGATED METAL PIPE	N/F NOW OR FORMERLY
HDPE HIGH DENSITY POLYETHYLENE	R/W RIGHT OF WAY
UGD UNDERGROUND DETENTION	LLL LAND LOT LINE
TBM TEMPORARY BENCHMARK	CONC. CONCRETE
EX EXISTING	INV INVERT
PROP. PROPOSED	EOP EDGE OF PAVEMENT
FH FIRE HYDRANT	TYP. TYPICAL
WM WATER METER	FENCE FENCE
LF LINEAR FEET	SILT FENCE SILT FENCE
DIP DUCTILE IRON PIPE	OVERHEAD ELECTRIC OVERHEAD ELECTRIC
PVC POLYVINYL CHLORIDE	SOILS SOILS
R RADIUS	EXISTING TREELINE EXISTING TREELINE
SF SQUARE FEET	BUILDING SETBACK LINE BUILDING SETBACK LINE
FFE FINISH FLOOR ELEVATION	VEGETATIVE BUFFER VEGETATIVE BUFFER



IF ANY CONFLICTS, DISCREPANCIES, OR ANY OTHER UNSATISFACTORY CONDITIONS ARE DISCOVERED, EITHER ON THE CONSTRUCTION DOCUMENTS OR FIELD CONDITIONS, THE CONTRACTOR MUST NOTIFY THE ENGINEER IMMEDIATELY AND SHALL NOT COMMENCE FURTHER OPERATION UNTIL THE CONFLICTS, DISCREPANCIES, OR OTHER UNSATISFACTORY CONDITIONS ARE RESOLVED.